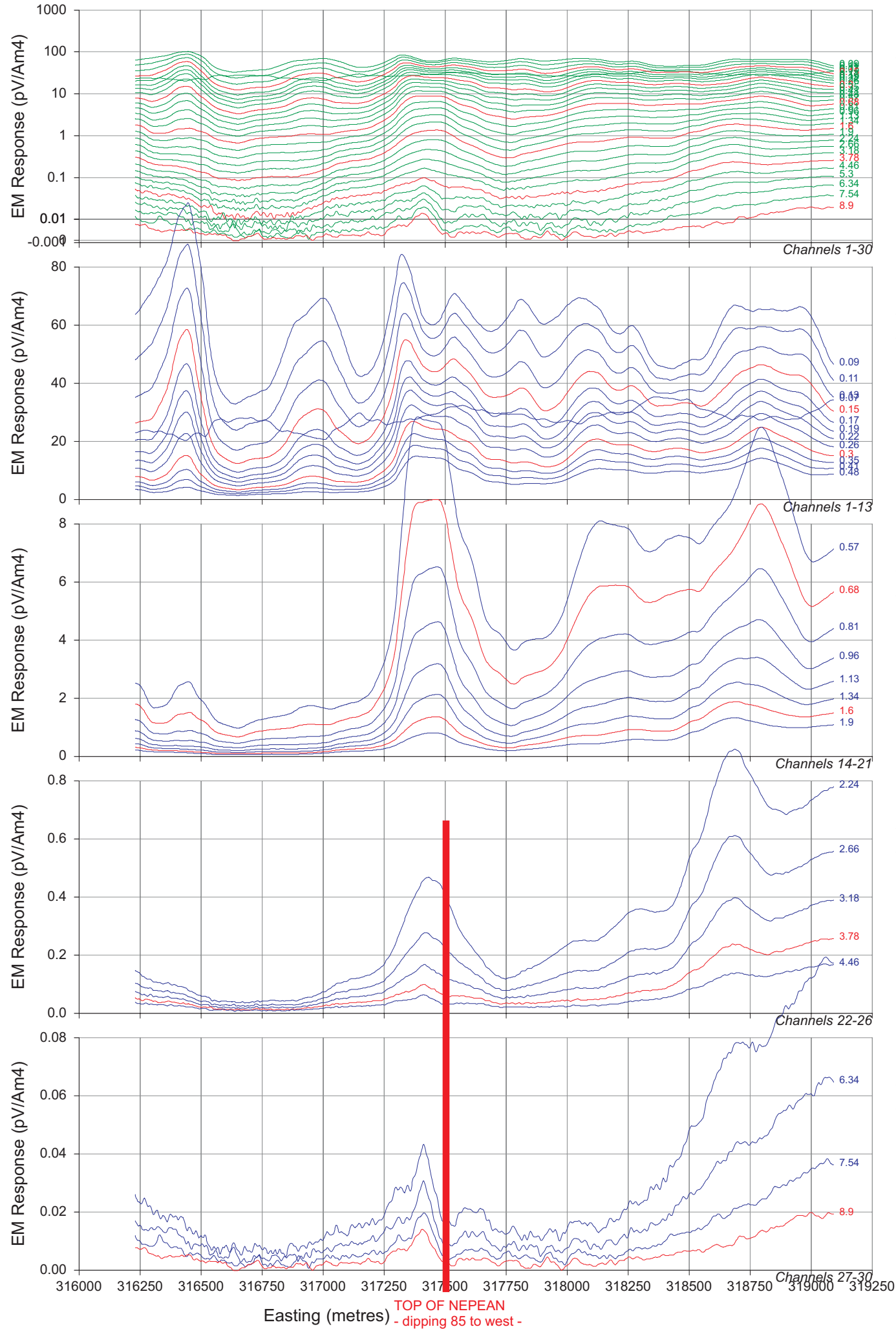
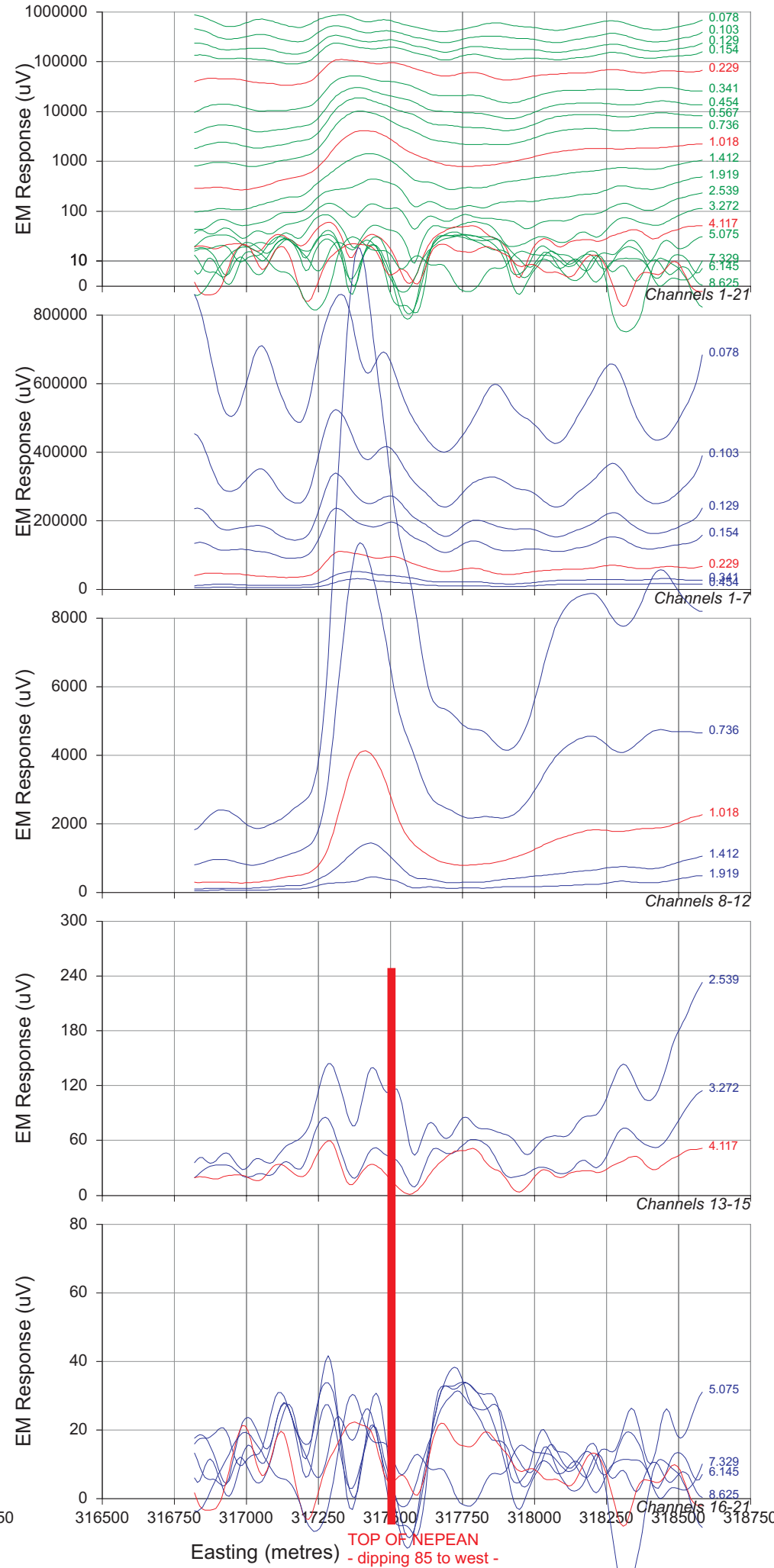


2040 VTEM



1305 Hoistem

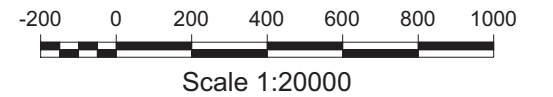


VTEM WINDOW TIMES (ms)
From the start of the Ramp

1 : 0.0700	16 : 0.8100
2 : 0.0900	17 : 0.9600
3 : 0.1100	18 : 1.130
4 : 0.1300	19 : 1.340
5 : 0.1500	20 : 1.600
6 : 0.1700	21 : 1.900
7 : 0.1900	22 : 2.240
8 : 0.2200	23 : 2.660
9 : 0.2600	24 : 3.180
10 : 0.3000	25 : 3.780
11 : 0.3500	26 : 4.460
12 : 0.4100	27 : 5.300
13 : 0.4800	28 : 6.340
14 : 0.5700	29 : 7.540
15 : 0.6800	30 : 8.900

HOISTEM WINDOW TIMES (ms)
From the start of the Ramp

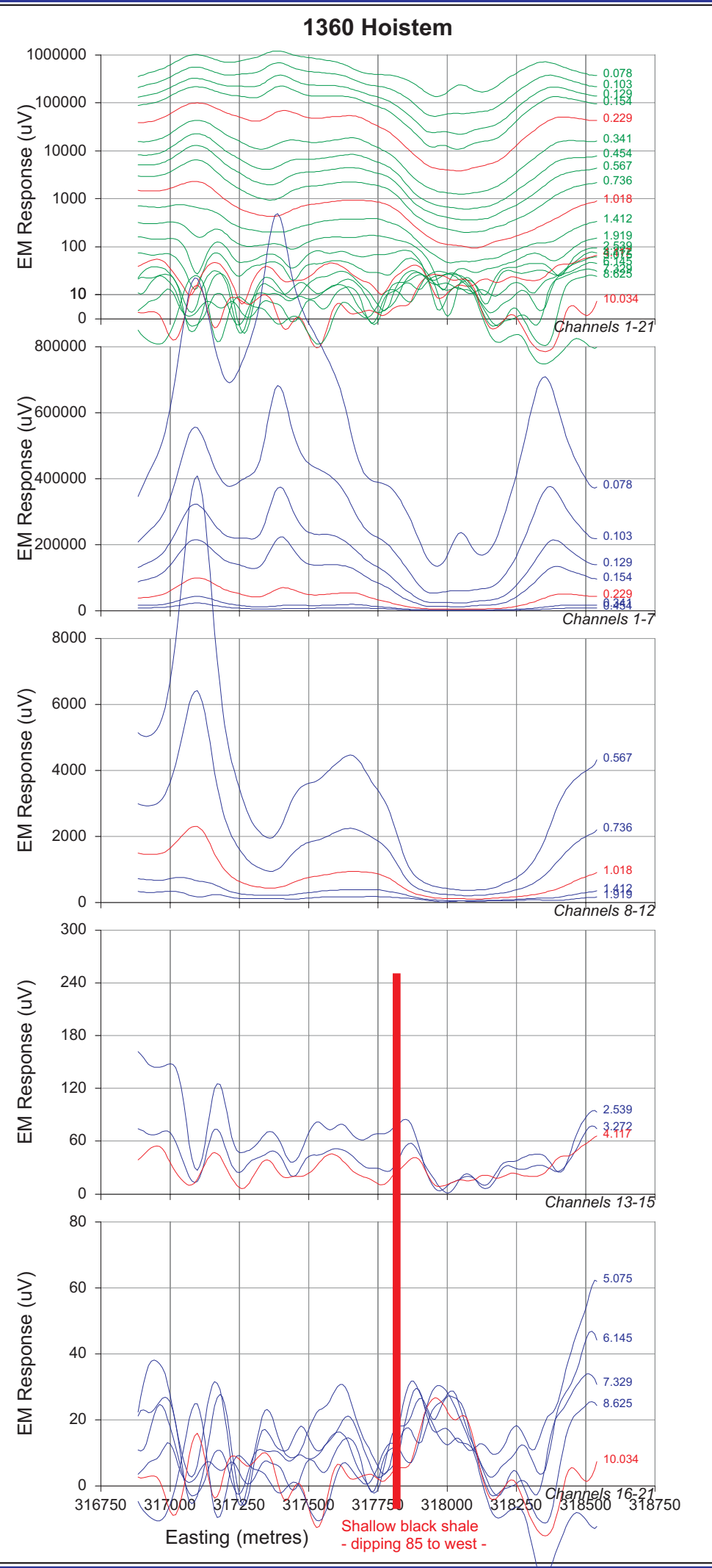
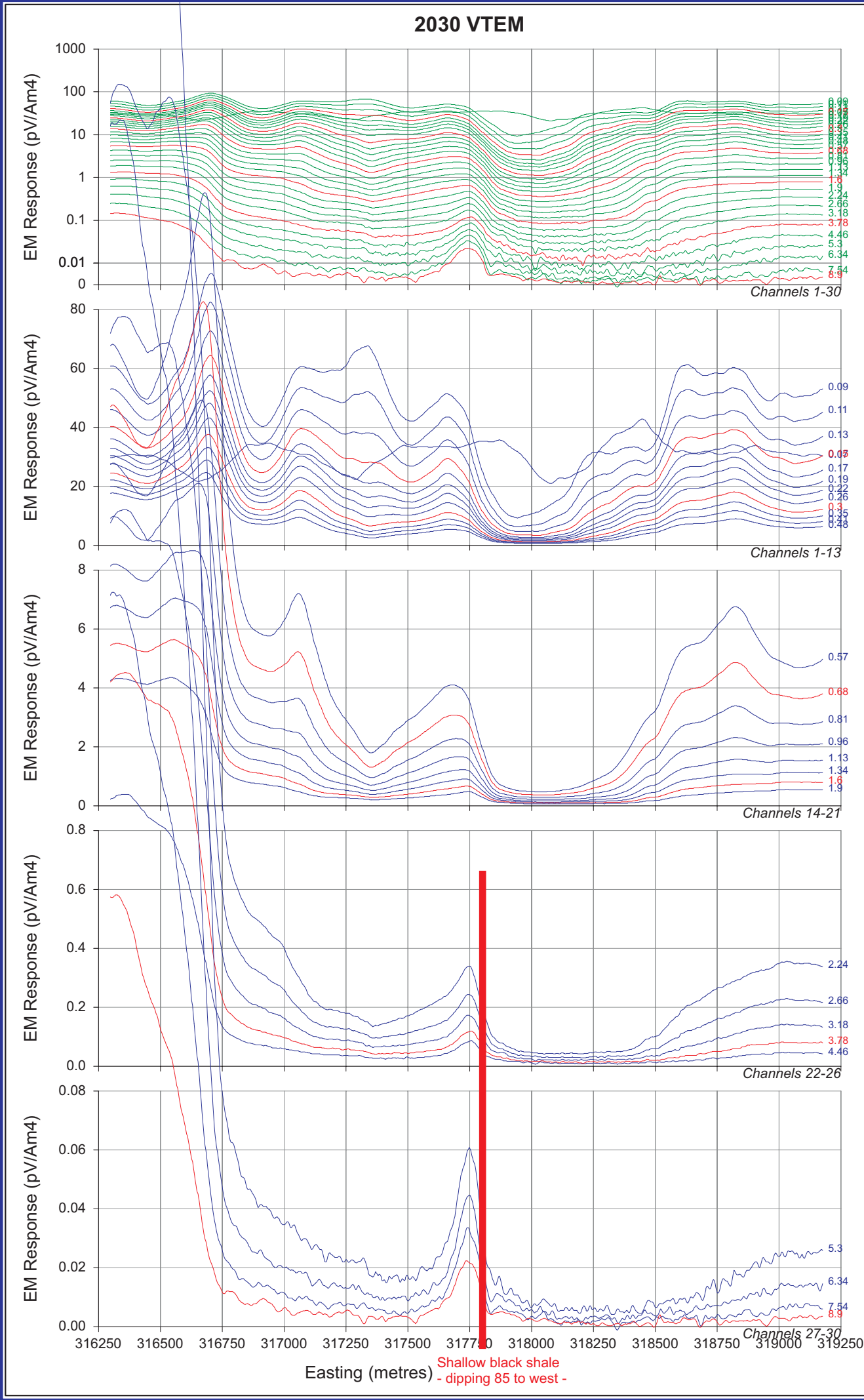
1 : 0.0780	12 : 1.919
2 : 0.1030	13 : 2.539
3 : 0.1290	14 : 3.272
4 : 0.1540	15 : 4.117
5 : 0.2290	16 : 5.075
6 : 0.3410	17 : 6.145
7 : 0.4540	18 : 7.329
8 : 0.5670	19 : 8.625
9 : 0.7360	20 : 10.03
10 : 1.018	21 : 11.72
11 : 1.412	



Southern Geoscience Consultants Pty Ltd
ACN 067 552 461

NEPEAN PROJECT
AEM Comparison
VTEM VS Hoistem
Line 1 - Nepean Mine

Drawn: P. Mutton Date: March 2007
Scale: Figure:

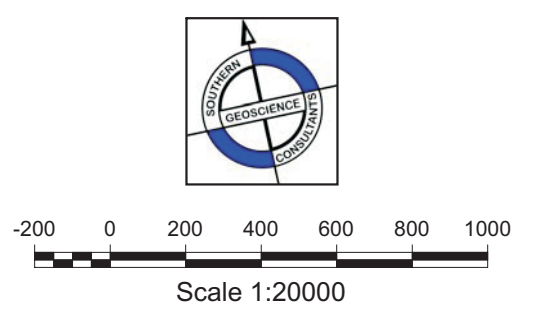


VTEM WINDOW TIMES (ms)
From the start of the Ramp

1 : 0.0700	16 : 0.8100
2 : 0.0900	17 : 0.9600
3 : 0.1100	18 : 1.130
4 : 0.1300	19 : 1.340
5 : 0.1500	20 : 1.600
6 : 0.1700	21 : 1.900
7 : 0.1900	22 : 2.240
8 : 0.2200	23 : 2.660
9 : 0.2600	24 : 3.180
10 : 0.3000	25 : 3.780
11 : 0.3500	26 : 4.460
12 : 0.4100	27 : 5.300
13 : 0.4800	28 : 6.340
14 : 0.5700	29 : 7.540
15 : 0.6800	30 : 8.900

HOISTERN WINDOW TIMES (ms)
From the start of the Ramp

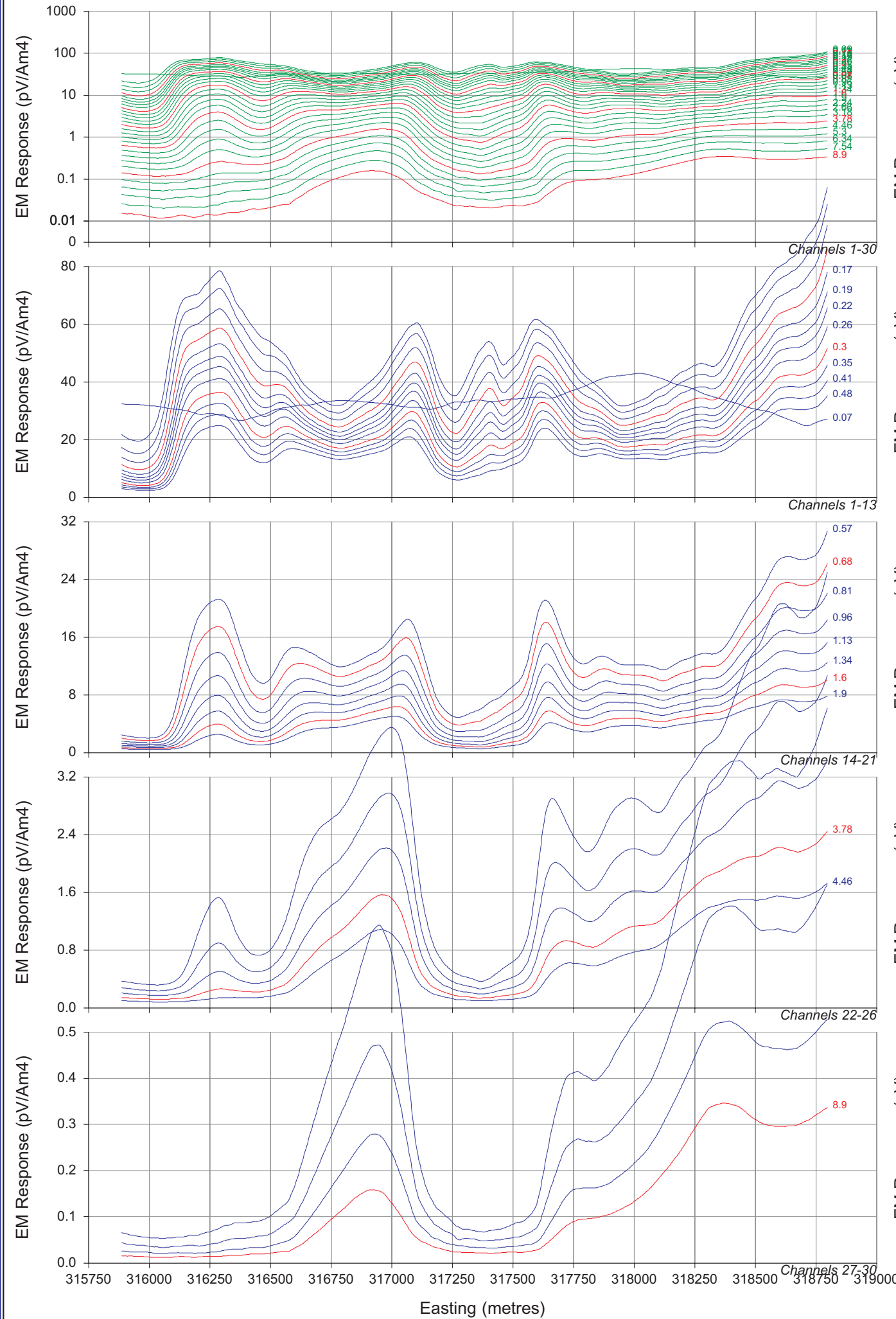
1 : 0.0780	12 : 1.919
2 : 0.1030	13 : 2.539
3 : 0.1290	14 : 3.272
4 : 0.1540	15 : 4.117
5 : 0.2290	16 : 5.075
6 : 0.3410	17 : 6.145
7 : 0.4540	18 : 7.329
8 : 0.5670	19 : 8.625
9 : 0.7360	20 : 10.03
10 : 1.018	21 : 11.72
11 : 1.412	



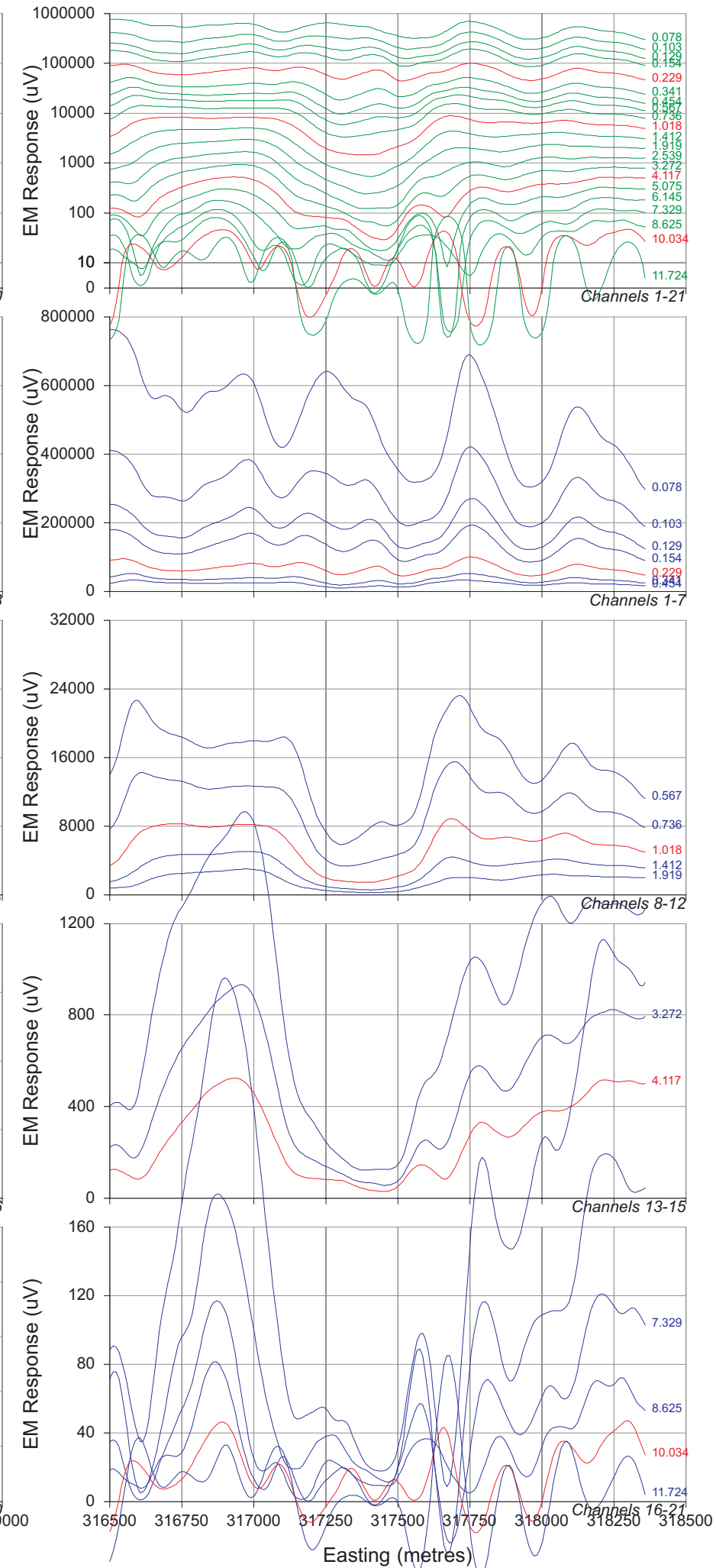
Southern Geoscience Consultants Pty Ltd
ACN 067 552 461

NEPEAN PROJECT
AEM Comparison
VTEM vs Hoistern
Line 2 - black shale

2050 VTEM



1050 Hoistem

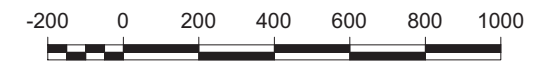
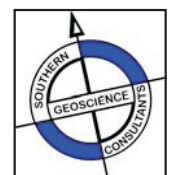


**VTEM WINDOW TIMES (ms)
From the start of the Ramp**

1 : 0.0700	16 : 0.8100
2 : 0.0900	17 : 0.9600
3 : 0.1100	18 : 1.130
4 : 0.1300	19 : 1.340
5 : 0.1500	20 : 1.600
6 : 0.1700	21 : 1.900
7 : 0.1900	22 : 2.240
8 : 0.2200	23 : 2.660
9 : 0.2600	24 : 3.180
10 : 0.3000	25 : 3.780
11 : 0.3500	26 : 4.460
12 : 0.4100	27 : 5.300
13 : 0.4800	28 : 6.340
14 : 0.5700	29 : 7.540
15 : 0.6800	30 : 8.900

**HOISTEM WINDOW TIMES (ms)
From the start of the Ramp**

1 : 0.0780	12 : 1.919
2 : 0.1030	13 : 2.539
3 : 0.1290	14 : 3.272
4 : 0.1540	15 : 4.117
5 : 0.2290	16 : 5.075
6 : 0.3410	17 : 6.145
7 : 0.4540	18 : 7.329
8 : 0.5670	19 : 8.625
9 : 0.7360	20 : 10.03
10 : 1.018	21 : 11.72
11 : 1.412	



Scale 1:20000

Southern Geoscience Consultants Pty Ltd
ACN 067 552 461

**NEPEAN PROJECT
AEM Comparison
VTEM vs Hoistem
Line 3 - Conductive host**

Drawn: P. Mutton

Date: January 2007

Scale: 1:

Figure: